

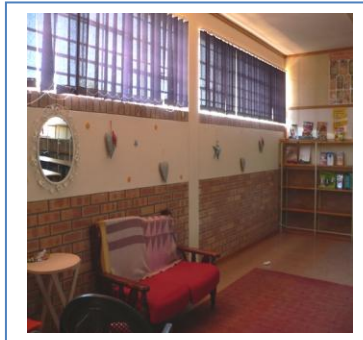
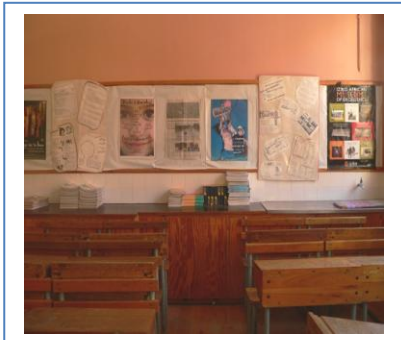
# A REPORT ON UNDERPERFORMING SECONDARY SCHOOLS IN THE WESTERN CAPE

## REPORT 3

### *Exploring Grade Repetition at Underperforming Schools*

November 2011

Wynand Louw  
Amiena Bayat  
Ilse Eigelaar-Meets



**Institute for Social Development**  
University of the Western Cape  
Bellville  
Cape Town  
[jwl@netactive.co.za](mailto:jwl@netactive.co.za)

**Department of Economics**  
University of the Western Cape  
Bellville  
Cape Town  
[amienabayat@telkomsa.net](mailto:amienabayat@telkomsa.net)  
[abayat@uwc.ac.za](mailto:abayat@uwc.ac.za)

University of the Western Cape | Bellville | Cape Town  
[jwl@netactive.co.za](mailto:jwl@netactive.co.za) | [amienabayat@telkomsa.net](mailto:amienabayat@telkomsa.net) | [ilse@soreaso.co.za](mailto:ilse@soreaso.co.za)



# **PREFACE**

As part of its drive to undo the legacy of years of race-based, inequitable development in South Africa, the first democratically elected government embarked on an ambitious programme of socio-economic reconstruction and redress in its quest to establish a more fair society in South Africa. The highly unequal and racially fractured school system was one of the first sectors that were addressed. Since 1995 the South African educational landscape has undergone fundamental change to improve the provision of schooling for those that were discriminated against. This included substantial reallocation of an ever-increasing portion of the annual budget to establish new, and improve existing, resources and services.

Although near universal access in the primary school sector has been achieved, the quality of education in both primary and secondary schools has been disappointing. Results from international benchmark tests show our learners are consistently outperformed by learners from poorer countries. In the Western Cape, the location of our research, the number of underperforming secondary schools (i.e. those with a matric pass rate of less than 60%) has more than doubled since 2006. This study aimed to better understand what the important reasons were/are that make these institutions perform badly and to make suggestions as to improve the educational outcomes of learners attending secondary schools in this province.

The research project stretched over an 18-month period and included both rural and urban schools. The research design allowed us to investigate the research problem in depth and breadth. We were correct in our initial assumption that a multitude of issues and factors cause schools to perform poorly, both inside and outside of the schooling system. We decided to present our findings according to the various pertinent themes that gradually evolved from the study. The findings on underperforming secondary schools are presented in five separate reports. These are:

**PAPER 1:** The Impact of School Level Factors on Educational Performance

**PAPER 2:** The Impact of Socio-economic Factors on Educational Performance

**PAPER 3:** Exploring Grade Repetition at Underperforming Schools

**PAPER 4:** School Governing Bodies at Underperforming Schools: How Effective Are They Really?

**PAPER 5:** Investigating WCED Interventions at Underperforming Schools

South Africa needs to solve the current crisis engulfing our schools. In order to chisel away at the country's present modest economic growth and subsequent high unemployment rate, we need to as a matter of urgency, understand the core reasons why schools are not working and fix them. It is our moral duty to do this for the millions of children that should receive an education that is of value to them. We owe it to them.

## ACKNOWLEDGEMENTS

A research project of this magnitude demands substantial commitment from team members. The authors wish to extend their deep appreciation to the following people for the sustained support over the last few months.

- Mastoera Sadan, Nathalie Vereen and Zsa Zsa Milongo of the Programme to Support Pro - Poor Policy Development in South Africa for their immeasurable support in ensuring the project logistics were kept on track.
- The European Union for funding the research.
- Nazeema Omar, who shared her immense knowledge and experience and played a pivotal role in the questionnaire construction, negotiating entrée to the schools and played a central role in the execution of the fieldwork.
- Caroline Poole and Francis Uys, who with Ilse Eigelaar-Meets of SOREASO Social Research Solutions ensured the data collection process, met the highest methodological and scientific standards.
- Rudewaan Arendse who ignited the initial spark for this study as well as for his analytical insights.
- Daniel Andrews, Masters student at the Institute who conducted most of the interviews and focus groups with SGBs.
- Priscilla Kippie, Chief Administrator at ISD who from the outset worked long hours to keep the administration on track.
- Belinda du Plessis of the School of Government at UWC who was responsible for managing the finances.
- Prudence Ramnath and Belinda Cupido, Masters students at ISD and Fru Wanka and Desmond Chisenga – Student Assistants: Department of Economics, UWC who assisted senior researchers in a variety of ways.
- Anneliese Burgess of the Story Telling Agency for her professional services.
- The WCED, Principals, School Governing Bodies (SGBs), School Management Teams (SMTs) and teachers for their willingness to participate in this study.

Wynand Louw  
Amiena Bayat  
Ilse Eigelaar

November 2011

# TABLE OF CONTENTS

1.	INTRODUCTION .....	1
2.	METHODOLOGY .....	2
3.	FINDINGS .....	5
3.1	REPETITION .....	5
3.2	FACTORS THAT IMPACT ON HIGH LEVELS OF GRADE REPETITION AT UNDERPERFORMING SCHOOLS .....	9
4.	POLICY CONSIDERATIONS AND RECOMMENDATIONS.....	19
4.1.	OBSERVATIONS AROUND LITERATURE .....	19
4.2	RECOMMENDATION TO POLICY .....	21
5.	REFERENCES.....	25

## LIST OF TABLES

TABLE 1: QUESTIONNAIRE CATEGORIES AS FOR EACH RESPONDENT GROUP .....	3
TABLE 2: SAMPLING FRAME.....	5
TABLE 3: SAMPLE.....	5
TABLE 4: SAMPLE REALISATION.....	5
TABLE 5: GRADE AND CORRESPONDING NORMATIVE AGE OF LEARNER (2011).....	9
TABLE 6: AVERAGE LEARNER TO TEACHER RATIO FOR THE PERIOD 2008-2010 ....	15
TABLE 7: KEY ISSUES AND PROBLEMS THAT IMPACT SAFETY AND SECURITY AT UNDERPERFORMING SCHOOLS (LEARNER RESPONSES).....	16
TABLE 8: TRAINING RECEIVED IN THE SUBJECT TAUGHT .....	17

# 1. INTRODUCTION

In its quest to achieve equity, quality and access to education in South Africa, the government has succeeded not only in expanding access to schools for most of the population, but also in the provision of a near universal primary school education in a relatively short period. In 2002 the completion rate for primary education for 18 year olds was 89.6%; by 2009 this had increased to 94% (StatsSA 2010, p. 43).

Despite these achievements, studies show that underperforming secondary schools in South Africa face problems with poor performance (Taylor 2007a, Taylor 2007, Fleisch & Shindler 2007). In South Africa, an underperforming school is defined as a school failing to achieve a Grade 12 pass rate of more than 60%.

The National Strategy for Learner Attainment (NSLA) was developed in 2004, by the National Department of Education. This programme consisted of a planned and sustained series and set of related operations, projects, activities, strategies and interventions with short and long term objectives of raising learner performance and ensuring improved quality learner achievement in all schools<sup>1</sup>. As part of this programme three strategic priorities were identified, i.e. 1) Teachers, with a focus on training, development and retention, 2) The provision of learning and teaching support material (LTSM) and, 3) increasing time spent teaching. The NSLA integrated a number of different national, provincial and local initiatives into a synergistic mission-directed programme of comprehensive interventions to tackle under-performance. Despite this initiative, this study, although focusing on schools in the Western Cape, strongly suggests that very little have changed at underperforming schools.

In 2006 there were 36 underperforming schools in the Western Cape. By 2009 this number increased to 85, accounting for almost 20% of all secondary schools within the province. Despite the introduction of a number of interventions by the Western Cape Education Department (WCED), with this project specifically focusing on those introduced during 2010, the number of underperforming schools still stood at 78 at the end of the 2010 school calendar. Most underperforming schools are located in the townships. These schools manifest many social dysfunctionalities emanating from the

---

<sup>1</sup> Power point presentation of Department of Education, Pretoria, 2007.

social environment in which they are rooted.

Our research was conducted in the Western Cape and focused on understanding the underlying factors responsible for the poor performance of learners, which is manifested amongst others in high rates of grade repetition or failure in underperforming secondary schools. The primary aim of this paper is to explore grade repetition at under performing schools in the Western Cape and sets out to present a set of recommendations to address poor learner attainment at underperforming schools.

## **2. METHODOLOGY**

This paper draws from data collected on general aspects related to school underperformance as part of a research project initiated by The Programme to Support Pro Poor Policy Development in South Africa (PSPPD). The unit of analysis defined for the broader study was underperforming secondary schools in the Western Cape. Underperforming secondary schools are defined as those schools that achieved lower than 60% in the final National Grade 12 examinations. The sampling frame consisted of secondary schools that achieved a lower than 60% pass rate for the 2009 final National Grade 12 examinations and consisted of 22 secondary schools for which comprehensive data was available at the time of finalising the sampling frame and sample population.

The sampling frame thus consisted of all confirmed 22 schools from which 14 schools were purposefully selected in order to ensure representation for both racial and location (urban/rural) variables. For the purpose of this study, rural schools were defined as all schools outside the Cape Metro area. Of the schools constituting the sampling frame (N=22) 15 were from within (urban) and 7 from outside the Cape Metropolitan area (rural). Of the 15 urban schools, 4 were classified as historically Coloured schools and 11 as historically African schools. Of the remaining 7 rural schools, 6 were classified as historically African and 1 as a historically Coloured school. The remaining 7 schools, not included in the sample were listed as replacements in the case of refusals.

The 14 schools that constituted the sample consisted of 9 urban and 5 rural schools. Of the 9 urban schools 4 were classified as historically Coloured schools and 5 as historically African schools. In the case of the 5 rural schools 3 were historically African



and 2 historically Coloured schools. Unfortunately access to some schools was found to be exceedingly difficult as principals of specifically historically African schools were not willing to partake in the study after being informed on the purpose thereof. After exhausting the replacement list, the research team was forced to include additional schools not part of the original sampling frame, in order to complete the fieldwork. In spite of these measures the team had to settle with the completion of only 12 schools, instead of the indented 14, due to time frame constraints.

The research methodology consisted of both qualitative and quantitative approaches. Three survey instruments (questionnaires) were developed, one for completion by the principals, one for educators and one for learners. Questionnaires were developed to measure a range of aspects shown by literature to impact on the functionality of a school and thus the academic performance of its learners. The table below gives a broad account of the type of questions included in the questionnaires by indicating categories of questions as for each respondent group.

**Table 1: Questionnaire categories as for each respondent group**

Questionnaire category	Respondent group		
	Principal	Teachers	Learners
School profile	✓		
Individual profile	✓	✓	✓
Human resource management	✓	✓	✓
Staff related aspects	✓		
Learner related aspects	✓		
School facilities	✓	✓	✓
Curriculum management	✓	✓	✓
Curriculum implementation		✓	
Parental and other community involvement	✓	✓	✓
School governance and management	✓	✓	
General questions (testing future perspective)			✓

Educators were randomly selected from staff lists provided by the school, with 2 educators selected for each grade offered by the school. Learners were randomly selected from class lists provided by the school with 8 learners selected from each

grade. The total numbers of questionnaires completed were: 11 principal questionnaires, 84 teacher questionnaires and 436 learner questionnaires. Semi-structured interviews were conducted with the School Management Team (SMT) of each school and focus group discussions were held with available members of the School Governing Bodies (SGBs) of the selected schools. These interviews were then transcribed and analysed.

The fieldwork team consisted of four senior researchers and one research assistant. Both principals and teachers received their questionnaires approximately a week prior to the school visit by the fieldwork team in order to allow enough time for its completion. During the visit, two members of the research team were responsible for the interviews with the principal and School Management Team whilst the other two and the assistant, were responsible for the completion of the learner and teacher questionnaires. Interviews with SGBs were conducted by a research assistant and had to be conducted at different time slots, often in the evening to accommodate working members.

Due to time constraints learner questionnaires were completed in a group format with one researcher acting as the primary facilitator whilst the other together with the research assistant, assisted individual learners as needed. In order to ensure effective management of the process, learners were split into two groups (two sessions), with group one consisting of Grade 8-10 learners and group two consisting of Grade 11 and 12 learners.

All questionnaires were checked for correct completion by the researchers and research assistant before learners left the group. Data was captured in SPSS by trained data capturers and cleaned by one of the senior researchers and research assistant before data analysis commenced. The fieldwork was conducted in a period of 8 weeks, commencing in February 2011 and concluded at the end of March 2011. All questionnaires were piloted and amended during the first school visit. Given the difficulty to negotiate access to schools, and that only minor adjustments were necessary after the pilot, it was decided to include these interviews as part of the final dataset.

**Table 2: Sampling frame**

Area distribution	Total	Historical racial classification of majority learners	
		African	Coloured
Cape Metro	15	11	4
Cape Winelands	4	3	1
Eden & Central Karoo	1	1	0
Overberg	1	1	0
West coast	1	1	0
Total	22	17	5

**Table 3: Sample**

Area distribution	Total	Historical racial classification of majority learners	
		African	Coloured
Cape Metro	9	6	3
Cape Winelands	3	2	1
Eden & Central Karoo	1	0	1
Overberg	1	1	0
West coast	0	0	0
Total	14	9	5

**Table 4: Sample Realisation**

Area distribution	Total	Historical racial classification of majority learners	
		African	Coloured
Cape Metro	7	3	4
Cape Winelands	3	2	1
Eden & Central Karoo	1	0	1
Overberg	1	1	0
West coast	0	0	0
Total	12	6	6

### 3. FINDINGS

#### 3.1 REPETITION

This paper aims to highlight high failure and repetition rates as a characteristic of underperforming schools. It is not at all the argument of this paper to show grade failure as an undesirable practice, in fact it is argued later that learners get promoted too easily with a detrimental impact on their later scholastic performance. Given the context of

current failure and repetition policy together with the performance of grade 12 learners at underperforming schools it is in fact postulated that if students are held back according to their yearly performance failure rates would indeed be higher than is currently the case.

Although grade repetition per se is not seen as a negative practice it is still important to understand the context within which, especially high failure rates, occur given the impact there of on the learner, the educational system and ultimately the broader society. Learners who fail are often ostracised and labeled by the school and their peers. They tend to experience problems with self-confidence and develop negative attitudes toward education and schools.

Other consequences of high failure and repetition rates are

- Resources at schools are placed under pressure by high failure rates
- Classrooms become overcrowded and teachers overworked with an inevitable resultant decline in the overall quality of teaching and learning
- Catering for substantially higher pupil numbers also places huge additional pressure on the fiscus
- A less tangible consequence for schools is the long-term damage high rates of repetition can cause to the well-being of staff and the reputation of the school as a centre of education.

### **3.1.1 Race and Performance**

The study found that most of learners at underperforming schools were predominantly African (66%) in a province where Coloureds are in the majority and Africans constitutes approximately 30% of the provincial population. In contrast, only 30% of learners in these schools were Coloured. When we compare the demographic profile of the province with the profile of learners at underperforming schools, it becomes evident that Coloureds are under-represented at underperforming schools.

As mentioned earlier, underperforming schools are characterised by high levels of grade repetition. Forty one percent of all learners in underperforming schools indicated that they had repeated one or more grades. On the face of it, the data for underperforming schools showed no significant difference in repetition rates between African and Coloured learners. However, further analysis revealed that Coloured learners at

underperforming schools are more likely to show multiple repetition rates compared to African learners. For example 80% of Coloured learners repeated multiple grades compared to 35% of African learners. This is somewhat of an unexpected finding as the Coloured learners in the study show better socio-economic living environments than their African counterparts.

One of the possible reasons for this finding emanating from the research findings, is a seemingly difference in views regarding the importance of education between African and Coloured learners. This finding is supported by the findings of Salo (2005) who shows this relative disregard towards education, specifically within the Coloured youth, as emanating from a culture deeply imbedded in social perceptions of future reality and general teenage behaviour. The factors that suggest a 'poorer' culture of learning amongst Coloured learners is the higher incidence of teenage pregnancy and gang-related activities amongst this group. This relationship between social perceptions, youth culture and educational attainment does, however, require more in-depth research.

### **3.1.2 Gender and Performance**

In comparing the failure rates of boy and girl learners the data show girls in general to have greater success, with 50% of male learners indicating to have repeated a grade compared to only 35% of female learners. This finding is consistent with previous research done on repetition rates of male and female learners in South Africa (Gustafsson 2011:8).

We found the differential between female and male repetition rates to be quite wide at underperforming schools. One tentative explanation, offered by experienced teachers in interviews, is that girls growing up in poor socio-economic conditions and working class communities are often burdened with a raft of domestic responsibilities from a young age. This causes them to mature earlier than their male counterparts bringing with it a greater sense of goal directedness and resilience - qualities that might influence their relationship with the school and their studies.

But, in impoverished areas, a strong *macho* culture often dominates teenage peer groups. This finds expression in deviant and aggressive behaviour in the context of anti-social gang formation. The underlying ethos of many of these gangs is anti-intellectual, encourages and celebrates values, norms and behaviour focused on immediate

gratification (Salo, 2005). It was pointed out by teachers that teenage boys, in particular, find it difficult to resist this potent counter culture, even while attending school. This is often exacerbated by the absence of positive male role-models.

### **3.1.3 Rural versus Urban Performance**

Repetition rates were higher in rural underperforming schools (51%) compared to urban schools (40%). Historically black rural schools in South Africa, including farm schools, struggle to shed the legacy of urban bias in socio economic development. Rural schools are typically more under-resourced than their urban counterparts and face deeper levels of poverty than urban areas (Bloch, 2009).

### **3.1.4 Back to the Primary Schools**

Sixty two percent of all grade repetitions at underperforming schools occurred during secondary school, i.e. Grades 8 and 9. Thirty one percent of repetitions of these learners occurred at primary school level, that is, grades 1 to 7 with only 7% of learners repeating grades in both primary and secondary school.

In measuring repetition rates of individual learners over time, the data strongly suggest that learners struggle during the first two years of schooling that is Grades 1 and 2, with repetition rates declining between Grades 3 and 7. From Grade 8 the data show a steady increase in the percentage of learners falling behind, with failure rates showing a peak in Grades 10 and 11.

During in-depth interviews with educators, principals, SMT- and SGB members a clear and strong perception on the primary cause of repetition was communicated, firmly placing the blame for the high failure rate evident in underperforming secondary schools on the poor quality of education at primary school level. It was repeatedly stressed by the participants that primary schools are failing in their duty to lay a solid educational foundation, especially in numeracy and literacy. This results in a shaky platform from which Grade 8 learners launch into the much more varied and demanding curriculum of secondary school.

Given this response it would then seem that an investigation into the performance of primary schools in township and rural areas, primarily feeding underperforming

secondary schools, should first and foremost be conducted in the search for an explanation for their persistent under-performance.

The table illustrates the impact of (multiple) grade repetition on the age composition of classes and the extent to which learners drop behind the normative age for a specific grade, by showing the age of learners as per grade at the time of the study, compared to the normative age generally expected.

**Table 5: Grade and corresponding normative age of learner (2011)**

Current age of learner	Grade and corresponding normative age					Total
	Gr. 8 (13-14years)	Gr. 9 (14-15years)	Gr. 10 (15-16years)	Gr. 11 (16-17years)	Gr. 12 (17-18years)	
12	3,8					0,7%
13	38,0	2,8	1,0			7,6%
14	36,7	38,0	4,0		1,1	14,1%
15	16,5	31,0	33,0	1,1	1,1	16,2%
16	2,5	16,9	31,0	19,1	4,5	15,5%
17	2,5	5,6	21,0	34,0	37,5	21,3%
18	F	5,6	6,0	20,2	22,7	11,3%
19			2,0	16,0	19,3	7,9%
20			1,0	5,3	10,2	3,5%
21				3,2	2,3	1,2%
22				1,1	1,1	0,5%
26			1,0			0,2%
Total number per grade	22	28	31	46	33	160
Total %	100,0	100,0	100,0	100,0	100,0	100

### **3.2 FACTORS THAT IMPACT ON HIGH LEVELS OF GRADE REPETITION AT UNDERPERFORMING SCHOOLS**

The research for this paper found that the root causes for the high levels of repetition at underperforming schools can primarily be related to three factors;

- Inappropriate policy
- School related factors and
- Socio-economic factors

### 3.2.1 Inappropriate Policy

Principals, SMTs and teachers agree that the most important issue that impacts on grade repetition is of a systemic and policy nature.

Current policy states that a learner may only be “held back” once per educational phase. This imperative forces and causes schools to promote learners to the next grade without them having mastered the necessary subject knowledge and educational competencies as demanded by the curriculum.

This was found to be fundamental to the under-performance of learners (and for that matter schools) because, as one teacher at a rural school said

*“...the school system is saturated with this problem, we are forced to promote mediocrity by the system... we pass the ball on to the next teacher... as the child grows older the problem grows bigger... when only 28% of the matriculants passes, we get the blame, then we are told to pull up our socks, to get more involved... I have told the District office the problem started 10 years ago, they say they know, but that we must ‘maak ‘n plan’...”*

A SMT member responsible for the Grade 8 learners at another rural school related her experience:

*“...last year we had 159 Grade 8s... I saw right at the beginning of the year we going to struggle with these children... they come from a variety of rural farm schools that are very weak... some could not read or write a sentence... I begged the District office to keep 79 learners back; they would never make it in Grade 9... I was not allowed to do so; it seems they are too afraid of the Head office in Cape Town...”*

Teachers and SMT members interviewed felt strongly that District Offices were not helpful in dealing with the contradictions and anomalies created by the application of this current policy. They were of the opinion that the District Offices were often caught between the realities of what was happening at schools and strict adherence to a set of tight target and policy prescriptions.

The high prevalence of learners leaving the formal school system in Grades 10 and 11 should be seen as a direct consequence of the enforced promotion of educationally unfit learners caused by, as one SMT member described it, “*the indiscriminate and reckless*



*application of a mindless policy*". Another respondent described the present promotion policy as *"perverse, a cynical chase after numbers"*. It was stressed that it was *"a selfish policy, designed to protect the education authorities and the school system whilst doing an enormous disservice to the children and their parents"*.

### **3.2.2 School Related Factors**

School related factors have been extensively discussed in literature and highlight operational areas within the schooling environment spanning teaching and learning, leadership and management, safety and security, school culture, governance and stakeholder participation (Christie, 2001, and Taylor, 2007, 2008).

#### *3.2.2.1 Leadership and organisational systems*

Leadership and organisational systems was shown as having a profound impact on the quality of teaching and learning at a school. Findings from our research suggest that in approximately 60% of underperforming schools surveyed, the relationship between the SMT and principal could be described as tense, at best, and dysfunctional, at worst. SMTs criticised the quality of leadership and the dedication of some principals. At one school visited the principal was absent on both occasions the research team arrived. No explanation for this could be given. Allegations were made by SMTs about principals not taking action against teachers whose behaviour was undisciplined and unprofessional, and about principals who were too afraid to discipline learners and who did not protect teachers against abusive parents. SMT members were also dissatisfied with the quality of communication within schools, alleging that principals withheld information as they chose.

It was pointed out by SMT members that weak and ineffective leadership impacts directly on the quality of teaching and learning as teachers struggle to manage classes due to a pervasive lack of discipline; feel insecure because of the absence of clear procedures and directives; and in some cases, feel unappreciated.

This leads to an unmotivated and demoralised teaching corps with subsequent harmful consequences for quality teaching. From protracted interactions with SMT members (some interviews were spread over a number of days) at the underperforming schools, it became apparent that they were also disillusioned and lacking in enthusiasm.

#### 3.2.2.2. *School management teams (SMT)*

Teachers were divided on the perceived contribution made by SMTs towards improving their teaching. It was disconcerting that a significant percentage indicated that SMTs never call meetings with teachers. Although there was broad agreement that meetings with SMTs facilitate communication and the flow of important information that help them deal with, what one teacher referred to as the “*ever growing stack of paper work and deadlines*”, nearly 40% felt these meetings were mere talk shops with few decisions being acted upon and implemented.

Very few teachers thought regular meetings with SMTs assisted them with curriculum issues, specific questions around subject content, improvement of their style of teaching or the effective management of classes. According to teachers, SMTs are not able to add value because they lack adequate critical knowledge, technical capacity and are weak leaders and managers. Teachers articulated a need for effective assistance, guidance and mentoring in most aspects of teaching, but specifically around issues of effective delivery of curricula and class management.

#### 3.2.2.3. *School governing bodies (SGB)*

All schools included in the study reported to have a properly constituted SGB. School governing bodies have the potential to make important contributions to quality teaching and learning and to the effective functioning of schools. Whereas SGB members mostly held positive views about their role in improving educational outcomes, principals and teachers were less enthusiastic about their role. Virtually all principals confirmed that SGB members were equipped in performing a number of mandatory functions, but did not add much value in empowering the school to any significant extent, lamenting a general lack of financial acumen or fundraising abilities with all principals lamenting the resultant “*poor man’s educational diet*” their schools have to function with.

Teachers were even more critical when evaluating the role of SGBs. Thirty eight percent thought they made no real tangible contribution to the school, in general, and the education of children, in particular. They felt SGBs played a strong part in the low morale amongst both teachers and learners by criticising rather than building competencies and self-esteem. The view that was repeatedly expressed was that members of the SGBs were mostly from working class backgrounds and that they did not fully grasp the

challenges that teachers and schools faced on a daily basis, nor were they able to help address the problems teachers encountered on a regular basis.

Teachers also felt that SGBs were often incapable of helping to apply effective disciplinary measures, like recommending expulsion. This had a destructive impact on the overall dynamic of a school. They were also of the opinion that SGBs did not have the necessary knowledge to make informed decisions regarding teacher appointments.

According to teachers the lack of capacity amongst SGB members to effectively raise funds for their schools, as one of the most important strategic functions of governing bodies, forces teachers to divert their attention from teaching related activities to fundraising with obvious negative consequences for the teaching and learning programme at school.

Collectively these factors served to impact negatively on quality tuition and instruction, partially explaining under-performance at these schools.

#### 3.2.2.4. *Absenteeism, class skipping and late coming by teachers and learners*

Principals and SMTs in turn were frustrated with the high levels of absenteeism of teachers at underperforming schools and claimed it played a significant role in failure and repetition rates at their schools. They felt that this has a profound impact on the lack of teaching and learning in classrooms and “*time on task spent*” at these schools.

Principals of schools catering for Xhosa-speaking learners singled out the serious disruptive impact that the phenomenon of teachers attending funerals in the Eastern Cape has on a sustainable educational programme. Present departmental policy requires a minimum number of days of absence before a temporary replacement can be employed. Often teachers return before replacements can be requested, leaving learners without tuition for consecutive days. One principal referred to “*the white school with lots of money in the town*” having a reservoir of highly qualified stand-by teachers that get paid to stand in for absent teachers. Some SMT members thought that endemic absenteeism of both teachers and learners was a result of the lack of discipline and non-implementation of existing policies due to absent or weak leadership demonstrated by principals.

Contact time between educators and learners was severely compromised not just by high rates of absenteeism and late coming, but also by the skipping of class hours by learners and educators alike. Eighty two percent of principals indicated that learners at underperforming schools were “*always late*” whilst 36% indicated that staff members were “*always late*”. Forty five percent of principals indicated that skipping class hours by learners “*always*” happened, whilst 55% stated that staff members “*sometimes*” did. In the case of staff members these problems are often exacerbated by the absence of an effective policy governing such behaviour in underperforming schools. In slightly more than 50% of the sample schools, principals indicated that there was no staff policy governing absenteeism, late coming or the skipping of class hours. In the few schools where such a policy was in place, it was often not effectively enforced.

#### 3.2.2.5. *Language of learning and teaching*

The medium of instruction in schools, referred to as the language of learning and teaching (LOLT), at the black underperforming schools was singled out as a serious constraint on effective instruction and learning.

Responses relating to the language used when teaching showed that different practices are followed, specifically amongst teachers whose mother tongue was not English or Afrikaans. In spite of formal policy regulations stating the language of teaching and learning as English and Afrikaans, a great number of teachers at underperforming schools indicated to make use of mother tongue instruction. In all these cases mother tongue referred to isiXhosa. This seemed to be mainly due to teachers as well as learners limited proficiency in English. This was illustrated by reports by teachers from a specific school mentioning cases of Grade 9 learners not able to answer a class test and merely submitting the questions back as answers, effectively exhibiting zero competence in comprehending any English.

Less than 20% of learners who repeated a grade received schooling in their mother tongue compared to 33% who were partially schooled in their home language, and nearly 50% who were taught in a first or second additional language. In many classes the researchers observed how teachers switched between languages, often conversing in Xhosa to explain subject content. If strictly applied this practice is against official policy. A unique challenge is presented by learners migrating from the Eastern Cape,

who in many instances, do not even have a rudimentary proficiency in English. All stakeholders at black schools were unanimous that the present LOLT policy was not working and was significantly contributing to high repetition rates.

3.2.2.6. *Overcrowding of classrooms and teacher to learner ratio's*

Our research established that overcrowding impacts the classroom environment in many ways. Overcrowding, especially in the lower grades of secondary schools, has a negative impact on teaching and learning. Learners, who were already educationally compromised at primary school level, are thrust into overcrowded classrooms.

With regards to the teacher to learner ratio the research found that for most underperforming schools the ratio is 40 learners per teacher. This is higher than the provincial average of 29 learners per teacher.

It is important to note that teaching and learning in underperforming schools has to take place in an environment marked by both overcrowding and high learner to teacher ratios. Clearly this type of environment is conducive to neither teaching nor learning. Teachers complained that these conditions greatly impacts learner concentration. Overcrowded class rooms make it impossible for teachers to move between desks and even between the front row and the chalkboard. This, together with high learner to teacher ratios, makes any personal assistance during classes practically impossible. In addition, large class sizes make it extremely difficult for teachers to enforce discipline.

**Table 6: Average learner to teacher ratio for the period 2008-2010**

Learner Grade group	Learner to teacher ratio as reported for the period 2008-2010		
	2008	2009	2010
Grade8	46/1	42/1	44/1
Grade 9	41/1	38/1	44/1
Grade 10	46/1	43/1	42/1
Grade 11	42/1	45/1	40/1
Grade 12	41/1	43/1	40/1

### 3.2.2.7. Safety and security of the school ecology

A stable, peaceful and safe school environment is conducive to successful learning. Our findings suggest that issues around safety and security, both on the school grounds and in the classroom have an impact on repetition rates. The data shows that incidences of violence, intimidation, illegal possession of drugs, inappropriate sexual behaviour, alcohol abuse and bodily injury to learners, verbal abuse and weapon possession are high in the schools sampled. Many teachers and learners also have to deal with intimidation, aggressive and violent behaviour in classrooms, which makes teaching and learning difficult. Eighty seven percent of teachers indicated that disruptive learners significantly limit the teaching and learning.

**Table 7: Key issues and problems that impact safety and security at underperforming schools (learner responses)**

<b>How often does the following happen at your school?</b>			
<b>Aspects related to safety and security at school</b>	<b>Always (%)</b>	<b>Sometimes (%)</b>	<b>Never (%)</b>
Swearing	39,2	48,6	12,2
Vandalism	23,7	58,5	17,8
Theft	28	56,9	15,2
Intimidation or verbal abuse among learners	23,1	57	19,9
Physical or bodily injury among learners	13,9	62,2	23,9
Intimidation of verbal abuse among educators/staff	7,1	30,4	62,5
Physical or bodily injury to teaching staff	9,9	27,4	62,6
Tobacco use or possession	50,7	31,1	18,2
Alcohol abuse or possession	9,8	38,6	51,6
Illegal drug abuse or possession	19,1	41,6	39,3
Weapon use or possession	18,3	46,8	34,9
Inappropriate sexual behaviour among learners	10,5	42,4	47,1
Verbal abuse of learners by educators	10,3	43,8	45,9
Verbal abuse of educators by learners	10,5	49,2	40,3
Inappropriate relationships between learners and teachers	19,4	24,9	55,7

The Western Cape Education Department (WCED) has responded to the lack of safety and security at schools by launching the *Safe Schools Project*. Schools are given inter alia access to security cameras, gates, fencing with razor wire. Critics have indicated

that the project does not assure the security of individuals but mainly that of the buildings and equipment. A lack of funding is a serious constraint of this initiative, preventing the project of immediately attending to urgent needs of schools.

### 3.2.2.8. *Teacher experience as an indicator of teaching quality*

Our study established that lower repetition rates were associated with longer teaching experience (measured in terms of number of years teaching) and higher qualifications. In addition to the above, the research findings suggests that the correspondence or alignment between subject training and actual subject taught to have an impact on repetition rates. The data found that a large proportion of teachers included in the study did not teach subjects in which they were trained. For example only 33% of teachers who specialised in Afrikaans taught Afrikaans. The absence of adequate numbers of educators who were trained in specialist subjects like Mathematics and Physical Science means that “non-subject specialists” often have to do stand in to teach these critical subjects.

A seemingly common tendency amongst teachers identified by principals is coming to class unprepared for teaching and then using tuition time for class preparation instead of instruction, thus wasting valuable teaching time.

**Table 8: Training received in the subject taught**

Subject currently teaching	Percentage of teachers who received training in the subject currently taught	
	Yes	No
Afrikaans Home Language	80	20
Afrikaans (First Additional Language)	33	67
English Home Language	100	0
English (First Additional Language)	91	9
Physical Science	67	33
Mathematics	73	27
Mathematics Literacy	82	18
Accounting	100	0

### 3.2.3 Socio-economic Factors

The publication of the Coleman Report in the USA (1966) firmly puts the spotlight on the effects of the physical and social environments on educational performance. The study confirmed that high repetition rates at schools were directly related to the adverse social and economic conditions faced by learners, but that poverty on its own was not responsible for poor educational outcomes in all cases. This is evident in the examples of some poorer countries in Sub-Saharan Africa that continued to outperform South African pupils in international literacy and numeracy tests. Today, research continues to show that school performance is directly and fundamentally impacted by socio-economic factors such as race, gender, poverty; and neighbourhood conditions. See van der Berg 2008, and Thrupp 2006, Lee & Madyun (2009).

Our research found that *most* underperforming schools are located in poor communities that also exhibited dysfunctional behaviour. According to O'Connor (2004, p58) a dysfunctional community can be characterised by a, *"number of social conditions/symptoms (including a state of mind in a community) such as crime, gang activities, violence and trauma, tuberculosis, alcoholism, substance abuse, teenage pregnancies.."*

According to this author a community that is dysfunctional, as defined above, has already internalised a dysfunctional system of beliefs, norms, values and knowledge. It is very difficult for schools located in dysfunctional communities to counter the culture and values of the surrounding community. Berliner (2009:29) has found that,

*"Schools whose attendance boundaries include dysfunctional neighborhoods, face ... greater challenges in nurturing student achievement than do those that draw students from healthier neighborhoods."*

Our data shows that learners at underperforming schools very often come from families where both the nuclear and extended family units had disintegrated. An analysis of the primary caregivers of the learners interviewed revealed significant differences between the caregivers of learners on the basis of race. On average local African learners are least likely to live with both their biological parents (27%) compared to 71% of foreign African learners and 45% of Coloured learners. The vast majority of local Africans live with only their mother (36%) compared to 26% of Coloureds and 7% of foreign Africans.



Migrant learners were particularly vulnerable as only 26% of them live with both their biological parents, 29% live with their mothers only and a staggering 14% live without any adults in the household (compared to 3% of non-migrant learners).

The low level of educational attainment among caregivers, even in households where both biological parents are present, suggests that parents are not able to meaningfully assist learners with homework. For example, 48% of primary breadwinners had completed some secondary schooling whilst only 28% had completed secondary school. This lack of educational attainment of caregivers is of particular relevance for Grade 11 and 12 learners as it implies that these learners are often left with little or no educational support apart from the school system.

## **4. POLICY CONSIDERATIONS AND RECOMMENDATIONS**

The causes of high rates of grade failure and repetition are multiple and multi-layered. This implies that a comprehensive attack on causes is required to address performance at underperforming schools. Any solution to underperforming schools would necessarily require interventions at both school level and domains that are external to schools.

### **4.1. OBSERVATIONS AROUND LITERATURE**

Strong evidence exists showing that adherence to basic educational systems and processes can have an impact on good teaching and learning. This is well-documented by Nick Taylor (2006, 2007). His research shows that issues around the maximisation of contact time with learners in class, the presence of both learners and teachers at school and in class, makes a positive impact on educational performance and on the reduction of grade failure. Much of this is achieved by good systems and discipline. Our research has confirmed this, but also revealed that the lack of expertise at underperforming schools meant that teachers were often required to teach subjects in which they had no formal specialisation.

Our research found governance, management and leadership at underperforming schools, all aspects that play a critical role at well-functioning schools, to be weak. A lack of implementation of departmental systems is evident. One example of this is the high

percentage of principals not adhering to the policy guidelines governing absenteeism, skipping of classes by teachers and learners and late-coming by learners in particular. This results in a chronic and systemic reduction of teaching and learning in class that is “*time on task*”, and subsequently contributes to high failure and repetition rates amongst learners.

The critical role that a good foundation phase plays in the successful participation and eventual completion of the educational career of learners is well-established. Our research has found a relatively high percentage of learners had to repeat Grades 1 and 2, suggesting a low level of school readiness amongst six and seven year-olds in the townships and rural areas of the Western Cape.

A policy issue interrogated by our research was the role of official language (policy) in successful teaching and learning. Research evidence clearly points to the didactic advantages of an appropriate LOLT (Bloch, 2002). Our findings have confirmed this. Principals, SMT members and teachers have stressed the difficulties that already disadvantaged learners experience with a language medium that is not their first and in many cases not their second language of preference.

Although there is no consensus in the literature as to the impact of class size on teaching and learning, our research suggests that teachers have difficulty managing overcrowded classes. This is exacerbated by badly disciplined children and learners struggling with concentration and the memorising of work due to the regular exposure to trauma associated with domestic violence and environments saturated with social problems. Under more ideal circumstances, that would imply a relatively safe and stable home and community environment, as well as a functional school, class size might not be a critical variable; however under circumstances and conditions as described above, it does become an additional constraining and disabling variable.

The study confirmed that high repetition rates at schools were directly related to the adverse social and economic conditions faced by learners. It found most underperforming schools were located in poor, dysfunctional communities and that it was difficult for them to counter the culture and values of the surrounding community without the support of the NGO and private sectors.

## 4.2 RECOMMENDATIONS TO POLICY

These recommendations are based on research carried out in underperforming secondary schools in the Western Cape, but are of a systemic and general nature. It should be considered for implementation at all (underperforming) schools in South Africa.

### **Recommendation 1: Cast a solid foundation**

*High quality educare programmes should be introduced to reach the 2-4 year olds living in vulnerable and marginalised areas before they reach their reception year.*

Our findings points to substantial failure rates in the first two years of schooling. This proves that a high percentage of children in townships and rural areas are not ready to participate in formal schooling at the beginning of their school careers.

The aggressive extension of Grade R by the Department of Basic Education throughout South Africa will contribute to the improvement in the level of school readiness of the most vulnerable cohort of the youngest learners. However, many children from impoverished and working class urban and rural households are not yet catered for by facilities that offer educational programmes of a high quality.

A broad consensus exists amongst educationalists that to successfully participate and complete formal schooling, learners must be able to comfortably deal with the first two or three years of schooling that is, the foundation phase.

### **Recommendation 2: Take a new look at primary schools**

*The quality of teaching within the primary school sector should be improved, specifically those feeding underperforming secondary schools.*

Our research found the teaching outcomes at many primary schools to not be of a level that enables Grade 7 learners to advance successfully to Grade 8 and beyond. The high repetition rate of particularly Grade 8 learners at underperforming secondary schools is proof of this.

It is recommended that the National Department of Basic Education institute a compulsory national Grade 7 assessment or examination in an effort to ensure a basic competency for learners entering secondary schooling. This will ensure that learners are assessed in a standardised fashion and that only those learners with the requisite skills are allowed to advance. It is acknowledged that this gate-keeping will inevitably increase learner numbers at primary level and measures to assist schools in managing this

development should be instituted simultaneously so as not to disrupt the educational programme.

### **Recommendation 3: Rethink grade promotion policy**

*Existing policies governing the promotion of learners per learning phase should be reconsidered.*

Our research found that the current policy whereby learners are allowed to fail only a set number of grades during a 12 year cycle is fundamentally flawed and has implications for both the learner and school.

Many learners, who have already repeated the quota of grades allowed in the Intermediate Phase while attending primary school, find themselves promoted to secondary schools in the Senior phase of the General Education and Training Band. The lack of preparedness of these learners to manage the senior phase is evident in the large repetition rates of Grade 8 learners in entering secondary school.

This ultimately results in high levels of frustration and disillusionment with the educational system amongst both learners and teachers at underperforming secondary schools. Learners feel lost and disengaged and their behaviour becomes disruptive. Teachers, in turn, feel demoralised and experience a sense of failure when large numbers of their learners continuously fail Grade 8. This pattern seems to repeat itself in Grade 9 and 10. Our findings suggest that the high drop-out rate in Grade 10 at underperforming schools is, to a significant extent, a consequence of this policy.

To address this, schools must be allowed to fail learners that do not achieve the required standard in examinations. No learner should be promoted without meeting the requisite standard.

### **Recommendation 4: Reduce teacher to learner ratio**

*The Department of Basic Education should increase the number of classrooms and teachers in the lower grades of secondary school significantly.*

Our research established that learner to teacher ratios at underperforming secondary schools, specifically Grades 8 to 10, were bigger than the prescribed norm.

We recommend that the Department of Basic Education significantly increase the human resource capacity of secondary schools in order to bring down the teacher to pupil ratio (ideally 1 to 25) to enable teachers to identify learning deficiencies and afford remedial intervention and/or individual assistance to learners.

### **Recommendation 5: Make the language policy work for learners**

*The Department of Education should address the present LOLT policy with a stronger focus on home language instruction.*

The present official language policy prescribing teaching and learning to be in either English and/or Afrikaans in South African secondary schools was found to profoundly debilitate or constrain both the learning and teaching process at underperforming secondary schools, which in the case of Western Cape primarily caters for Xhosa-speaking learners.

All interviewed stakeholders stressed that the present policy is not working and creating serious impediments to teaching and learning and that official policy was being circumvented by different means and practices by principals, SMT members and teachers.

### **Recommendation 6: Strengthen leadership and management**

*Principals should sign performance contracts, SMTs should be up-skilled and SGB's should be differently constituted.*

Shortcomings with the management and governance of underperforming schools were found.

Due to the poor quality of principal leadership generally found at underperforming secondary schools evidenced in poor principal accountability, it is recommended that, in conjunction with a performance contract, a mentoring system be instituted to develop leadership skills.

SMTs are perceived by teachers not to assist educators to become better teachers. Teachers articulated a need for effective assistance, guidance and mentoring in most aspects of teaching, but specifically around issues of effective delivery of curricula and class management. Their contribution could be enhanced if they were up-skilled in their respective subjects and freed up more by the appointment of additional teachers.

Although SGBs potentially can make meaningful contributions, their impact is seen as limited. An important reason is the modest level of experience and skills amongst the parents of these schools suggesting the existing model is flawed when applied to schools located within a township and/or impoverished working class context.

A possible route to strengthen the capacity of SGBs is through the targeted nominations of highly skilled individuals from civil society, private sector companies and academia.

### **Recommendation 7: Revisit existing official policy regulating teacher absenteeism**

*The current official policy that regulates absenteeism amongst teachers needs to be critically reassessed by the relevant authorities*

Principals at underperforming schools stressed the negative impact on teaching and learning of the high prevalence of absenteeism amongst teachers. They alleged that many teachers exploit the current policy that regulates absenteeism. In many cases the duration of teacher absence makes it impossible for schools to access additional assistance within the context of the current Departmental policy.

### **Recommendation 8: Building a bridge - acting on environmental challenges**

*A bridging mechanism should be developed to address both school and non-school issues.*

Our findings have established a raft of essentially non-educational variables that influence the ability and attitude of learners to productively and optimally engage in educational programs.

Educational authorities have limited capacity and influence and are not able to act back at broad societal realities and challenges impacting on learners. It is important that society recognises and acts on this.

We recommend a bridging mechanism that brings together programmes and interventions by all stakeholders in society. Given the multi-faceted nature of variables associated with underperformance at township and rural schools, a broad-based and integrated response is sought that involves government, civil society, business and the community. This is in line with a recent statement made by the Deputy Minister of Basic Education provided below:

*“The starting point for change in the education sector is with the poorest of the poor, and the key question is how do we get the public and our partners in the private sector to respond to this?”*

(Deputy Minister of Basic Education, Mr. E Surty, 2011.)

An example of such a bridging system can be found in the Madrasati “My School” Initiative, developed and implemented in schools in Jordan (see appendix 1 for detail on this model). It is proposed that more such models are reviewed as positive examples of building bridges between teachers, learners and ultimately the community.

## 5. REFERENCES

- Berliner, D.C. (2009) Poverty and Potential: Out-of-School Factors and School Success. Arizona State University: Education Policy Research Unit. <http://epicpolicy.org/publication/poverty-and-potential>
- Bloch, C. (2002). A case study of Xhosa and English bi-literacy in the foundation phase versus English as a 'medium of Destruction. *Perspectives in Education*, Vol. 20, No. 1.
- Bloch, G. (2009). *The Toxic Mix. What's wrong with South African schools and how to fix it.* Tafelberg, Cape Town.
- Bodenstein, M. (2008). *What works in school development?* Joint Education Trust (JET). [www.jet.org.za](http://www.jet.org.za)
- Christie, P. (2001) Improving school quality in South Africa: a study of schools that have succeeded against the odds. *Journal of Education*, (26):40-65.
- Gustafsson, M. 2011. The when and how of leaving school: The policy implications of new evidence on secondary schooling in South Africa. It is available at [ideas.repec.org/p/sza/wpaper/wpapers137.html](http://ideas.repec.org/p/sza/wpaper/wpapers137.html).
- Lee, M. and Madyun, N. (2009). The Impact of Neighborhood Disadvantage on the Black-White Achievement Gap. *Journal of Education for Students Placed at Risk (JESPAR)*, Vol. 14 No. 2, pp 148-169. <http://web.ebscohost.com.ezproxy.uct.ac.za> (Database: ERIC)
- Muijs, D. (2007) *Improving failing schools: Towards a research-based model.* [www.fm-kp.si/zalozba/ISBN/978-961-6573-65-8/077-090.pdf](http://www.fm-kp.si/zalozba/ISBN/978-961-6573-65-8/077-090.pdf)
- O'Connor, C.J. (2004). A review of the developmental vision and work of the City of Cape Town's Community Development Department (February 1997 to December 2000 ) and its successor the department of Community Services (January 2001 to June 2003) which was aimed at transforming socially dysfunctional communities such as Manenberg. Masters thesis report, School of Government of the University of the Western Cape.
- Salo, E., 2005. *Mans in Ma Soe: Ganging practices in Manenberg, South Africa and the ideologies of masculinity, gender and generational relations*, <http://www.csvr.org.za/wits/confpaps/salo.htm>.
- Statistics South Africa. (2010). *Millenium Development Goals. Country Report 2010.* Pretoria

Thrupp, M. and Lupton, R. (2006). Taking School Contexts More Seriously: The Social Justice Challenge. *British Journal of Educational Studies*, Vol. 54, No. 3, Social Justice and Education: New and Continuing Themes, pp. 308-328. ([www.jstor.org.ezproxy.uct.ac.za](http://www.jstor.org.ezproxy.uct.ac.za))

Taylor N. (2006). Accountability and Support in School Development in South Africa. Paper presented to the 4th Sub-regional Conference on Assessment in Education, 26-30 June 2006. Hosted by UMALUSI.

Taylor N, Fleisch B, Shindler J. (2007). Education Scenarios for 2019. Paper prepared for the Key Driving Forces Scenarios 2019, the Office of the Presidency, 11-12 June 2007.

Taylor N. (2007a). Equity, efficiency and the development of South African schools. Presentation to the Consortium for Research on School Quality seminar, April 2005. Also published as Chapter 29 IN: *International Handbook of School Effectiveness and Improvement*. Springer International Handbooks of Education, Vol. 17. Townsend, Tony (Ed.). Dordrecht: Springer.

Taylor N. (2007b). How can school performance be improved? Presentation to the Imbewu Programme Review Conference, Port Elizabeth, 25-28 June 2007.

Taylor, N. (2008). What's wrong with South African schools? Presentation to conference on 'What's working in school development', 28 – 29 February. JET Education Services.

Van der Berg, S (2008). How effective are Poor schools? Poverty and educational outcomes in South Africa. *Studies in Educational Evaluation* 34 (2008) 145–154.